



Capricorn Coast
Landcare
Group

Envirolink Newsletter

November 2016

Date Claimers

6th

Birds in Capricornia Survey (ongoing) – **Birdlife Capricornia**

7th – 13th

National Recycling Week – click on the [NRW website](#) for more information, and watch our Landcare Facebook site throughout the week for tips and info.

12th

4pm – 6pm: Emu Park Bushcare working bee Marine Parade reveg site. Enq: jweekers@yahoo.com.au

13th

9am-11pm: Recycling Week 'rubbish rumble' – Capricorn Coast Landcare. Clean-up targeting rubbish hotspot at Cedar Park-Ross Creek. Meet at Tourist Info Centre, Anderson Park, Scenic Highway, Yeppoon. Morning tea provided. Enquiries/RSVP 4939 1002 or envirolink@cqnet.com.au

26th

Emu Park Bush Care end of year dinner for members – Pine Beach Hotel. RSVP Julianne (above email)

**COMING UP
IN DECEMBER**

Fig Tree Creek working bee (CCLG) - date to be advised

Giving comes in many forms

I am always humbled when people give so generously to Landcare with their time and hard-earned dollars, because there's not a lot of either around these days.

I recently helped out a local Yeppoon resident and pensioner with organising plants for his garden and getting them planted. Neville generously donates an amount of money every fortnight to Landcare and I want to publicly acknowledge his kind contribution. I was also recently surprised and pleased to accept a cheque for \$500 from the Capricorn Coast Healthy Ageing Group, on behalf of CCLG. These funds will be invested into delivering hands-on learning experiences to Junior Landcarers in our local schools.

We greeted several new faces at the Great Northern Cleanup. Most pleasing though was the enthusiasm of younger children who come along with their parents. All in all, 20 volunteers (and a ute) retrieved 302kg of rubbish in urban streets/drains/creeks/roadside areas adjacent to Fig Tree Creek. The amount was quite mind blowing! The event also identified two further hotspots which we will target at our National Recycling Week RUBBISH RUMBLE, planned for Sunday, 13 November. Hope to see you there!

Also my special thanks to Deanne from Council who donated a large number of lovely bromeliads to help us restore Nancy and Tracey's memorial gardens at Yeppoon Primary School following cyclone damage. I am most grateful to you all.



Alby assists CCLG member Neville with planting – a welcoming green area in an urban front yard.



Alby accepts a cheque for \$500 from President of Capricorn Coast Healthy Ageing Group, Joan Loram.

~ Alby Wooler

President & Junior Landcare

Landcare news



Great Northern Clean-up
20 volunteers
0.75km radius of Fig Tree Creek
20 bags + ute = 302kg rubbish!



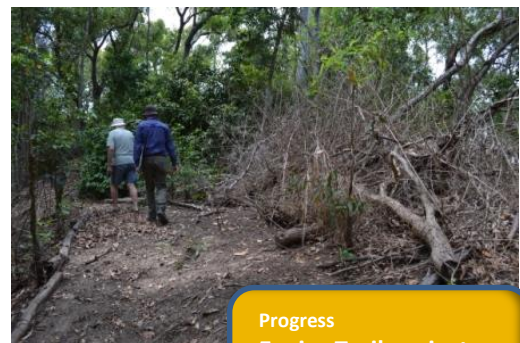
Want to know what's going on?

Read it first on Facebook...

[Capricorn Coast Landcare Group Facebook Page](#)



Like us on
Facebook



Progress
Enviro Trail project
Yeppoon State School
Opening – end of year



Urban Landcare Day
'Going Potty'
Reduce, Reuse, Recycle
53 visitors





Photo source: Forest & Kim Starr creative commons

NATIVE PLANT OF THE MONTH

Necklace Bean *by Malcolm Wells*

Sophora tomentosa is commonly called Necklace Bean or Silverbush. However the latter name is also given to several other species which can cause confusion. The plant is a tall shrub with greyish green leaves and terminal racemes of attractive yellow pea flowers. These are present between December and July, with pendulous seed pods produced from May to January. It occurs in coastal areas from the Northern Territory down the Queensland coast to northern NSW.

Plant numbers of this species have been reduced in some areas by the clearing of dune vegetation, excessive recreational use of beaches and foredunes, and damage during weed control programmes. The main problem for the plant in NT & Queensland has been the development of coastal resorts. The plant contains an alkaloid that has been used for a range of medical purposes, but is poisonous in large doses.

Sophora tomentosa is a great plant for landscaping in seaside locations, and is resistant to salt spray as can be expected. It is easily grown from scarified seed, and ideally requires warmth and good drainage.

A FREE Necklace Bean is available for all CCLG members from the Envirolink Office courtesy of Livingstone Community Nursery. We still have some very healthy ARCHER CHERRY plants available.

The fascinating world of MINI BEASTS

The March Fly – blood sucker extraordinaire! *by Rosemary McMahon*

They are identifiable by their bulging eyes, large robust body and painful bite. And this year it seems they are making their presence felt earlier than usual (or is this just at my place?). March flies belong to the family *Tabanidae*, and like mosquitos, it's the female that comes looking for blood to satisfy her need for protein to develop eggs. Males exclusively feed on pollen, nectar or plant juices making the species good pollinators.

Over 200 species of march fly are found in Australia and they are at their most annoying in the warmer summer months when there is moisture around. Mating often occurs in swarms, and after the act, females can travel for several kilometres looking for a blood meal. Eggs are then laid in hundreds on stones and any vegetation that is near, or partially submerged in water. Tabinad adults generally only live for 3-4 weeks, although other large flies can live up to two years.

Female flies possess two razor-sharp mouth blades that pierce skin and extract blood quickly. In fact livestock and other animals that can't easily budge them, can lose up to 300mL of blood a day when they are at their worst. This creates serious problems for growth and milk production.

So with all this blood sucking and flying from animal to human and back again, should we be worried about them transferring disease to us? Fortunately no (at least not in Australia), but this may change in the future. For more information: [Arthropod Pests PDF - Commonwealth of Australia 2012](#).



Natalie Tapson (CCLicense by-nc-sa/2.0)



WEED IT OUT! by Malcolm Wells

Bidens pilosa (Cobbler's Peg)

Bidens pilosa is an annual weed that originates in South America. It is a daisy with tiny yellow flowers surrounded by white petal-like bracts. The flowers occur for most of the year and it is a common weed in disturbed areas, waste land, roadsides and in dry infertile areas of your garden. It can grow to 1m in height and is easily spread from clusters of distinctive seeds that have hooked bristles making it easy to attach to clothing or the fur of animals.

According to Tim Low ('Wild plant foods of Australia'), this plant is probably the most widely eaten plant in parts of tribal Africa. The leaves do not taste very good but are considered edible when boiled in a large volume of water. Other ingredients are used to mask the flavour. For more information [refer here](#).

Bidens pilosa usually pulls out very easily, or when teased out with a trowel. Take care to bag the seed carefully as they remain viable in the soil for many years.



TOP GARDENING TIP

herb gardens

By Malcolm Wells

I love cooking, and I love using fresh herbs in the dishes that I cook. We have a patio that receives good morning sun and is shaded in the afternoon, and the herbs thrive in this position. When we lived on two acres I constructed a herb garden that was about 40 metres square, with paths and a sun dial at the centre. It was very attractive but a nightmare to maintain. Worse still, plants such as borage, mint and fennel went berserk. They choked their neighbours and took over whole beds. These days the herbs are all in separate pots; easy to weed, water and harvest just before using. The smell of the plants is

also a delight, wafting into the house when the leaves are picked.

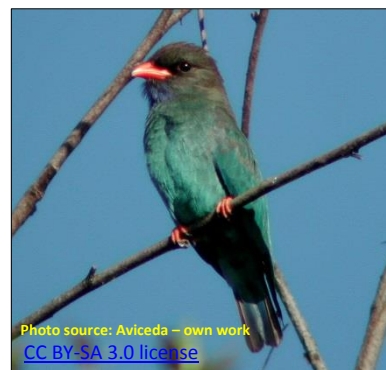
Although the herbs attract pests, I refuse to spray. Instead we get a lot of ladybirds and other predatory insects that keep the numbers of pests down. I prune most of the flowers as they appear, to promote heavier leaf growth but I like to leave some as the pollen attracts native bees.

Just lately, we also have three St George Cross spiders that have made webs across some of the pots. I was going to clear the webs to move the spiders on, but when I saw how many insects were caught up in their webs I decided we could afford to share the space. I just make sure my wife does not pick the herbs, as she is not so keen on having such close neighbours!

A WORD ON BIRDS by Allan Briggs

This coming Sunday (6 November) is the next **Birds in Capricornia survey** and your spreadsheet should be getting filled up with all of that important data we need to tell us where our bird species are across the region. Most of our summer migratory species have arrived with the Dollarbird (*Eurystomus orientalis*) being the last one to arrive throughout October (see article in last month's newsletter).

They nest in tree hollows and are noted for their spectacular flight displays. With temperatures rising the best time to do a survey is early in the morning before it gets too hot. Birds will roost during the heat of the day and re-appear in late afternoon when it is cooler.



Dollarbird (*Eurystomus orientalis*)

If you have any bird identification problems just send me a description and a photo of you can. For more information visit [Birdlife Capricornia](#) or contact Allan Briggs (abriggs@irock.com.au) if you'd like to take part in monthly surveys.



Reusable Catering Kit



REDUCE



REUSE



RECYCLE



RECOVER

*Stop using throw-away plastic at events and parties and promote being **CLEANER & GREENER!***

*Landcare's Reusable Catering Kit is available **FREE** for use by community groups, businesses and schools.*



Catering Kit contains 30 settings: plates, cutlery, cups, 2 vinyl tablecloths, drink jugs, serviettes, assorted serving bowls.



This product is part of the Cleaner-Greener Community Engagement Project supported by Fitzroy Basin Association Inc. through funding from the Australian Government's Landcare Programme.



ENQUIRIES: EnviroLink Office 4939 1002 / envirolink@cqnet.com.au



It's that time of the year again!

Membership renewal DUE

What does membership do?

Your membership allows Capricorn Coast Landcare Group to continue to promote sustainable landcare practices and awareness in our community. Landcare volunteers are enthusiastic, unpaid, and work tirelessly on revegetation and creek care projects to improve ecosystem functioning and connectivity within our broader urban and coastal landscape. CCLG hosts events, workshops, and supports other community organisations to improve awareness of environmental values, pressures and impacts that affect us all. Alby's Junior Landcare Programme enables our local schools and their students to get involved with hands-on learning activities while nurturing curiosity, and building ethics and connections to the natural world.

\$5 INDIVIDUAL

\$10 FAMILY

\$55 BUSINESS

Sponsorship

Please use the membership renewal form (page 7). Payment options are included.



How good a recycler are you? [Take the Quiz!](#)

Friday File Fling

Host a Fling on Friday 11 November 2016 or any other day during National Recycling Week that works for your workplace. Check out the video to see how the office Fling works - it's a fun way to get staff involved in a positive environmental activity. For everything you need to promote and organise your Fling, [visit the Friday File Fling pages](#) and register your workplace.

Host a Swap Party!

Swap parties are fun, free and green. No money changes hands but you'll get rid of some of your cast-offs and find some new treasures.

Close the recycling loop

Unless you're buying recycled, you're only doing half the job. It's all about closing the recycling loop. The more products you buy made from recycled materials the greater the environmental benefits and efficient use of natural resources. Australian made recycled products have even greater environmental benefits.

National Recycling Week

Rubbish Rumble

Rubbish Hot Spot Cleanup!

Cedar Park / Ross Creek

Sunday, 13 November 2016

From 9 am -11 am

Meet at Tourist Info Centre
(Anderson Park, Scenic Highway, Yeppoon)

BYO: hat, sunscreen, closed shoes, water bottle, gloves
Morning Tea and top-up cold water supplied

Enquiries & RSVP Envirolink: 4939 1002 or envirolink@cqnet.com.au



Capricorn Coast
Landcare
Group



Enviro
LINK
A Project of Capricorn Coast Landcare Group Inc.



Capricorn Coast Landcare Group Inc.

ABN: 48 170 539 519



Landcare – a partnership between the environment and sustainable production

General meetings are held on the 1st Tuesday of every second month at 7.30 pm at the Envirolink Centre, 3 / 78 John Street, Yeppoon. All memberships are due for renewal at the October AGM (one (1) vote per membership).

Your email will be automatically added to our Envirolink Newsletter and CCLG membership
Please tick this box if you do not wish to receive them.

☐

mailing lists.

☐

New member

☐

Renew / Update details

MEMBER CONTACT DETAILS		
Name:		
Address:		
City:	State:	Post Code:
Home Phone:	Work Phone:	Mobile:
Email:		
SIGNATURE		
<i>I support the goals, values and activities of Capricorn Coast Landcare Group Inc.</i>		
Signature of applicant:		Date:

PAYMENT METHOD		
<input type="checkbox"/> Single Membership is \$5.00 GST included.	<input type="checkbox"/> Family Membership is \$10.00 GST included	
<input type="checkbox"/> Group Membership is \$22.00 GST included.	<input type="checkbox"/> Business Membership is \$55.00 GST included	
<input type="checkbox"/> Cash	<input type="checkbox"/> Cheque	<input type="checkbox"/> EFT
Electronic Transfer Reference Number :		
Bank details for on-line payments: BSB 064 712 A/C 10018138 Account Name: Capricorn Coast Landcare Group Inc. * Reference deposit with your first initial & surname.		

Please return to:

Capricorn Coast Landcare Group Inc.
PO Box 727, YEPPOON, QLD, 4703

Phone: (07) 4939 1002

Fax: (07) 4939 1668

Email: envirolink@cqnet.com.au

OFFICE USE ONLY			
Date Received	/ /	Email database	
Receipt Number		Envirolink Newsletter	
		Membership List	

THANKYOU TO OUR BUSINESS SPONSORS!!!



Life...Let us help you Live it!

Shop25, Keppel Bay Plaza, Yeppoon



178 Kinka Beach Road, Tanby Q 4703
Open Mon-Sun Ph 07 4939 7200

**Will your business be the next
to feature here?**

Call us on 4939 1002 to
find out how 😊

FREE FIREWOOD!

Pick Up only – central Yeppoon.

Call Kathryn on 0438 134 375 to arrange.

Capricorn Coast Landcare Group and the Envirolink Centre are supported by...

